



C LATHE - POWDER COAT - WELDING - ANODIZE - ADC 12 - YL 102 - ASSEMBLING - AL PROFILE - PMMA - ADC6 - PPS - SPINNING - PPS
NG - SPINNING - POLISHING - INJECTION - NC MACHINING - NC MILLING - DRILLING - DIECASTING - CHROME PLATING - ANODIZE - W
E - POWDER COAT - WELDING - ANODIZE - ADC 12 - YL 102 - ASSEMBLING - AL PROFILE - PMMA - ADC6 - PPS - SPINNING - PPS - NYLC
NG - SPINNING - POLISHING - INJECTION - NC MACHINING - NC MILLING - DRILLING - DIECASTING - CHROME PLATING - ANODIZE - W
NC LATHE - POWDER COAT - WELDING - ANODIZE - ADC 12 - YL 102 - ASSEMBLING - AL PROFILE - PMMA - ADC6 - PPS - SPINNING - PI
DIECASTING - SPINNING - POLISHING - INJECTION - NC MACHINING - NC MILLING - DRILLING - DIECASTING - CHROME PLATING - ANO
- PMMA - NC LATHE - POWDER COAT - WELDING - ANODIZE - ADC 12 - YL 102 - ASSEMBLING - AL PROFILE - PMMA - ADC6 - PPS - SPIN
NG - SPINNING - POLISHING - INJECTION - NC MACHINING - NC MILLING - DRILLING - DIECASTING - CHROME PLATING - ANODIZE - W
C LATHE - POWDER COAT - WELDING - ANODIZE - ADC 12 - YL 102 - ASSEMBLING - AL PROFILE - PMMA - ADC6 - PPS - SPINNING - PPS
NG - SPINNING - POLISHING - INJECTION - NC MACHINING - NC MILLING - DRILLING - DIECASTING - CHROME PLATING - ANODIZE - W

OEM

Each customer is unique in our eyes. We are devoted to provide quality assured customized and comprehensive services to our customers. Founded in 2002, with a factory of 25,000 sq. meter and over 300 staff members, we are associated by the tough and strong entrepreneurs and designers who are experienced in lighting industry.





Conceptual Idea to Product

Endeavored to build a one stop manufacturing center, we keep expanding and investing in different range of facilities and equipments to offer different production methods and finishing to meet your unique design of lighting fixtures.

Integrated with our pursuit of quality and supported by the creative, energetic as well as flexible engineers, technicians and team members, we have full ability to turn your conceptual idea into product.



R&D

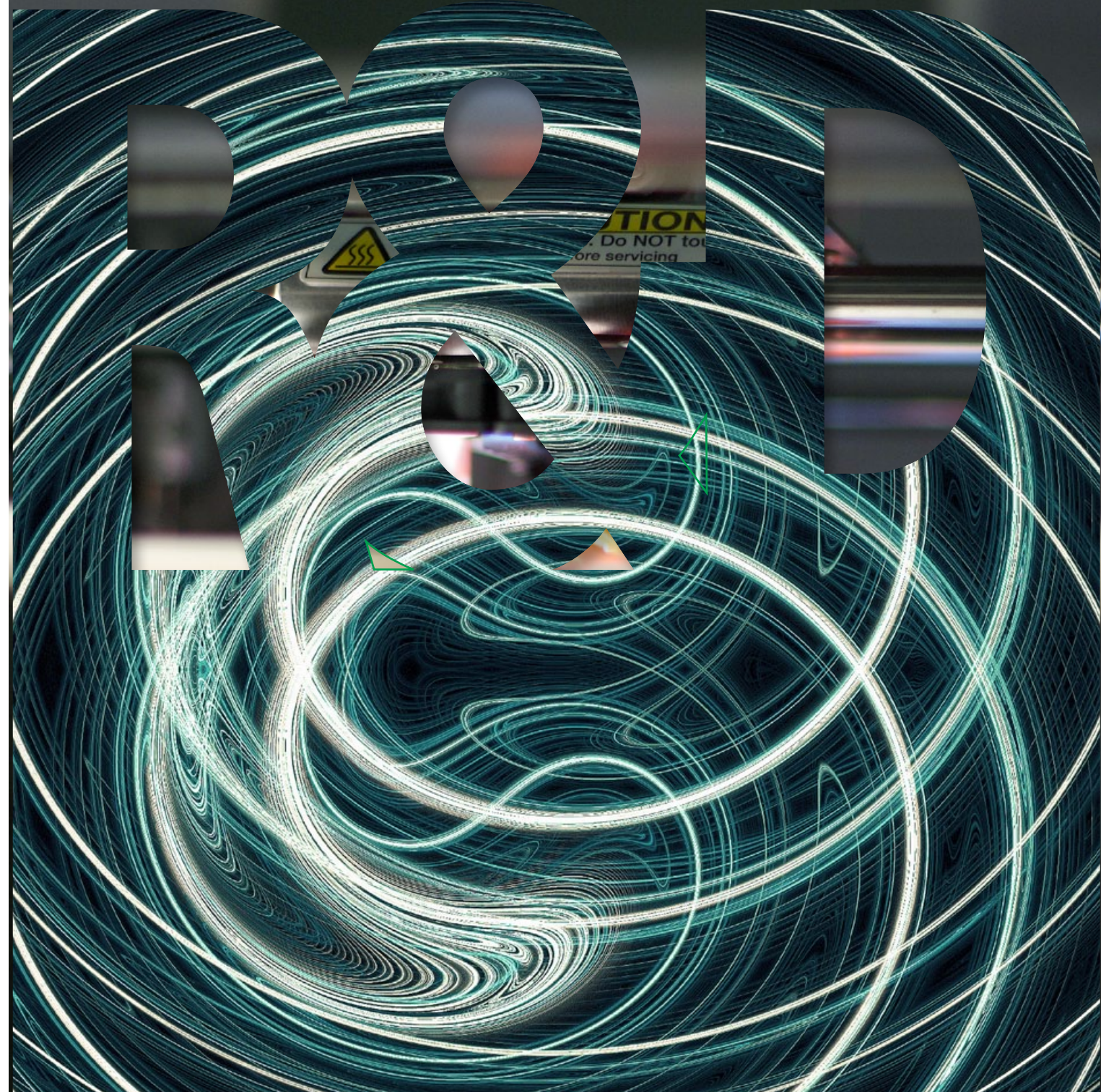
From natural daylight to luminaries, Lighting is undoubtedly essential to our life.

Appropriate and efficient lighting presentation is the vital element to navigate our life to success.

However, the value and existence of Light are not always being recognized.

Driven by our passion for Light, we commit to continuous researches for developing the best quality lighting solutions for our surroundings.

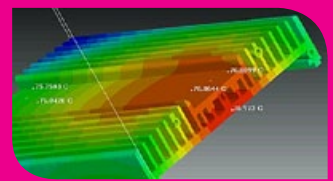
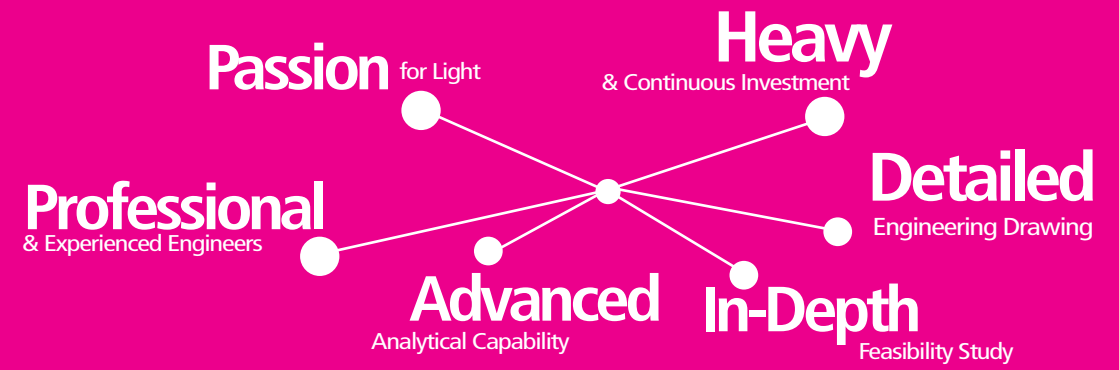
And by working in collaboration of practitioners who possess knowledge and years of experience in lighting technologies, we stand by our commitment to improve the quality of light and, eventually the quality of life.





Continuous Research & Development

Our Passion accompanied proficiency leads us to desire, imagine, explore and experiment every possibility. Heavy investment in R&D further assists us to materialize our capability and ability. Based on your ideas, our professionals furnish a feasibility study in terms of mechanical, electrical, and electronic aspects by detail investigation with our molding and production departments. Following our constructive suggestions and feasible plan, a complete understanding on your design and budget leads you to carry out practically your conceptual ideas to meaningful and cost effective luminaries. Meanwhile you find a meaning to "Quality".



CFD Software



Pro-E Engineering Program



SolidWork Program

Quality

We always consider Quality as the core of all our activities, a prime factor to succeed in our business.

We know that it is not something attained solely in the Department of Quality Control.

Rather, it is obtained and aligned with the whole culture and atmosphere in the company.

The organization structure, responsibilities, procedure, and resources are all important factors to implement Quality management.

We know very well that it is the contribution from every single part of us.





From Raw Materials to End Products

Beginning with raw materials being controlled and inspected; in-process and final product testing against written specifications; internal inspection based on published sampling plans before a product launch in the market, our Quality is closely tied with our quality manual and documentation system which developed by each operating unit. It gives an overview of our quality system which is supported by high standard operating procedures.

To approve our standard levels and explore markets worldwide, international laboratories Kema-Keur, ETL are invited to certify our factory and China Compulsory Certificate (CCC) awarded our company to explore the huge potential market - China. It is a continuous pursuit of quality. We believe, to improve the quality in our work, we are to improve the quality of our life.

Quality Management

Over 10%
Workforce in Quality Control

In-house
Test & Analysis

Heavy Investment in
QC Equipment

Annual Factory Inspection by
International
& Independent Certificate & Inspection Organizations



RoHS Testing Equipment



Hardness Tester



High Voltage Test Equipment

Comprehensive Services

Comprehensive Services Under One Roof

Over the years, our factory has extended our range of services from Assembling to a wide variety of production services including: Die-casting, Injection, Hydraulic Stamping, Spinning, CNC Milling & Turning, Punching, Polishing and Coating & Painting. With our strive for Quality and R&D as well as the strength from full range of facilities, ZD has ambition to offer comprehensive services to our customers under one roof.



Die-casting



Plastic Injection



CNC Milling



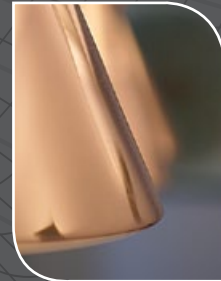
Coating



Hydraulic Stamping



Spinning



Polishing



Assembling



ODM

Although at one time, lighting is used to be just the basic appliance, today, literally become an art

To assist you to
Accommodate Quickly and Flexibly to the Market
Speed Up the Launching of New Product
Reduce Cost in Research Significantly
Rapidly Diversify Product Variety

We **DESIGN** our own masterpieces to Fit Your Market.



 **International (HK) Ltd.**

a: Unit 710, 7/F, Building 12W, HK Science Park, Shatin, Hong Kong **t:** +852 2898 9097 **f:** +852 2686 8547 **e:** sales@zdintl.com **w:** www.zdintl.com

LATHE - POWDER COAT - WELDING - ANODIZE - ADC 12 - YL 102 - ASSEMBLING - AL PROFILE - PMMA - ADC6 - PPS - SPINNING - PPS
G - SPINNING - POLISHING - INJECTION - NC MACHINING - NC MILLING - DRILLING - DIECASTING - CHROME PLATING - ANODIZE - W
POWDER COAT - WELDING - ANODIZE - ADC 12 - YL 102 - ASSEMBLING - AL PROFILE - PMMA - ADC6 - PPS - SPINNING - PPS - NYLC
G - SPINNING - POLISHING - INJECTION - NC MACHINING - NC MILLING - DRILLING - DIECASTING - CHROME PLATING - ANODIZE - W
C LATHE - POWDER COAT - WELDING - ANODIZE - ADC 12 - YL 102 - ASSEMBLING - AL PROFILE - PMMA - ADC6 - PPS - SPINNING - PI
ECASTING - SPINNING - POLISHING - INJECTION - NC MACHINING - NC MILLING - DRILLING - DIECASTING - CHROME PLATING - ANO
C - PMMA - NC LATHE - POWDER COAT - WELDING - ANODIZE - ADC 12 - YL 102 - ASSEMBLING - AL PROFILE - PMMA - ADC6 - PPS - SPIN
G - SPINNING - POLISHING - INJECTION - NC MACHINING - NC MILLING - DRILLING - DIECASTING - CHROME PLATING - ANODIZE - W
LATHE - POWDER COAT - WELDING - ANODIZE - ADC 12 - YL 102 - ASSEMBLING - AL PROFILE - PMMA - ADC6 - PPS - SPINNING - PPS
G - SPINNING - POLISHING - INJECTION - NC MACHINING - NC MILLING - DRILLING - DIECASTING - CHROME PLATING - ANODIZE - W